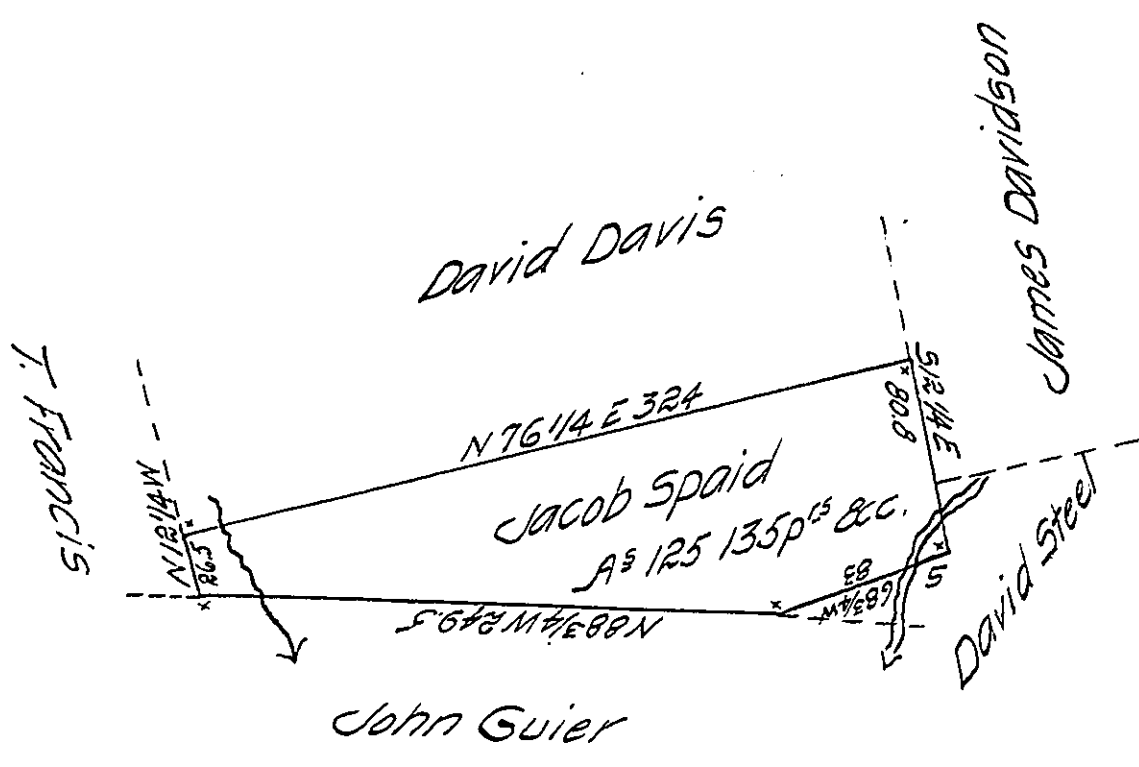


Sug. Loaf -
Luzerne.



Draft of a Tract of land situate on the Waters of
 Nescopeck creek in Sugarloaf Township Luzerne County, sur-
 veyed for Jacob Spaid, November 16th 1822, in pursuance of
 a Warrant dated March the 11th 1822 and Containing One
 hundred and twenty five Acres & One hundred and thirty
 five perches and allowance of Six per Cent for Roads &c.
 Josiah Lewis, Dep^y Sur^r

To Samuel Cochran Esq^r
 Surveyor Gen^l Harrisburg

N.B. The above tract of land is occupied and
 improved by the said Jacob Spaid, and has been, since
 June 4th 1804.

Josiah Lewis D.S.

IN TESTIMONY that the above is a copy of the original remaining on file in
 the Department of Internal Affairs of Pennsylvania, made
 conformably to an Act of Assembly approved the 16th day of
 February 1833, I have hereunto set my hand and caused
 the Seal of said Department to be affixed at Harrisburg,
 this twenty eighth day of December 1906.

Joseph P. Brown
 Secretary of Internal Affairs.